

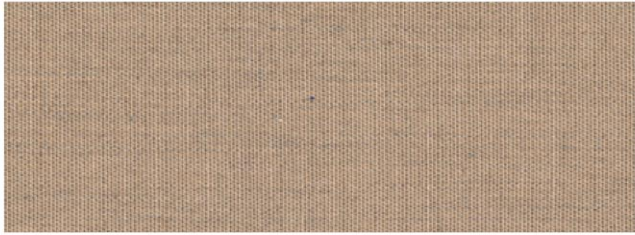
# Yurtessa



Sabbia (1)



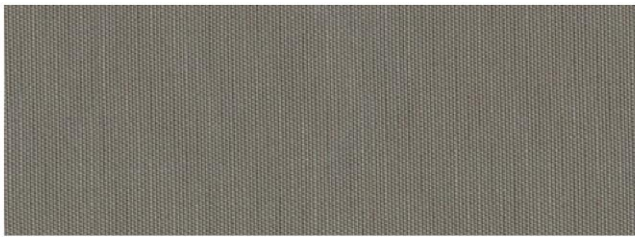
Crema (2)



Beige melange (3)



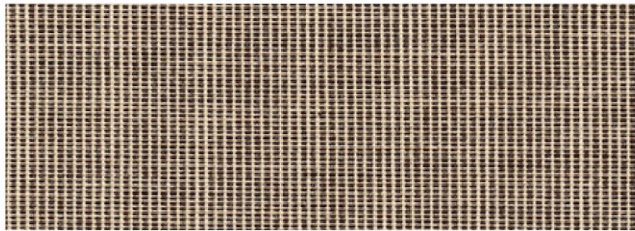
Taupe melange (4)



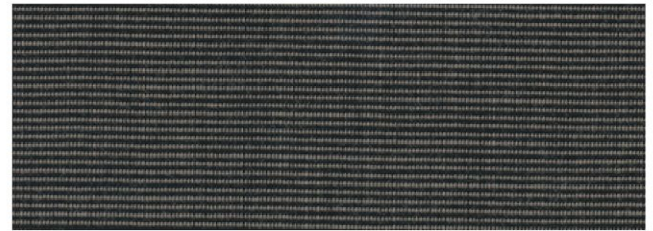
Topo (5)



Caffé (6)



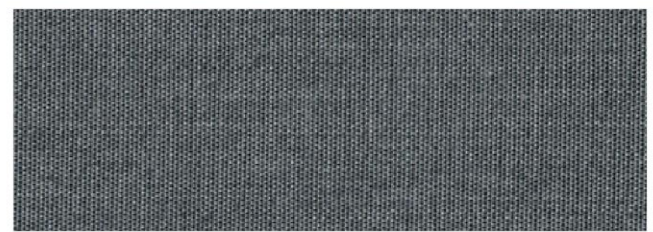
Tortora (7)



Fumo (8)



Grigio melange (9)



Titanio melange (10)



Bordeaux (11)



Verdone (12)

# Yurtessa

<b>Fiber analysis</b>	85 % Acrylic fiber solution dyed 15% PA resins
<b>Structure</b>	warp 29 threads/cm fill 16 threads/cm
<b>Yarn number</b>	warp Nm 2/34 fill Nm 2/34
<b>Width</b>	197 cm
<b>Weight</b>	360 g/m <sup>2</sup>
<b>Finishing</b>	Teflon® + Anti-mould treatment TRIPLE coating
<b>Water column</b> (UNI EN ISO 20811)	>1.500 mm (coated)
<b>Tensile strength</b> (UNI EN ISO 1421)	2013 N warp 907 N weft
<b>Tensile elongation</b> (UNI EN ISO 1421)	31,5% warp 23% weft
<b>Double Tear Method</b> (UNI EN ISO 4674-1 Met A)	105,0 N warp 72,0 N weft
<b>Air permeability</b> (UNI EN ISO 9237)	1 dm <sup>3</sup> /m <sup>2</sup> /sec
<b>Light and weather fastness</b> (UNI EN ISO 105 – B04)	8
<b>UV Rays protection factor</b>	UPF 50 +
<b>Warranty period</b>	5 years

